



Procalcitonin (PCT)

# Preserve the power of antibiotics for future generations

B·R·A·H·M·S PCT: Early infection diagnosis and  
targeted antibiotic guidance

# Suspicion of bacterial infection?

## Superior differentiation with PCT

### Challenging infection diagnosis in children

- Fever is often the only symptom for an ongoing infection in infants and young children.
- In children with fever it is sometimes difficult to assess the source, type and severity of the infection correctly.
- This often results in an **overprescription of antibiotics**, with all the potential consequences of **resistance development**.
- In that situation biomarkers are a useful tool for early diagnosis as they are easy to measure and rapidly available for immediate clinical decision making.

### PCT accelerates treatment decisions

- Bacterial infections can neither be predicted nor ruled out by bedside-available clinical parameters. However, pediatric patients with peripheral bacterial colonization, local infection without invasive sepsis, and most of those with viral infections were demonstrated to have low PCT levels.<sup>1</sup>
- Low PCT levels ( $\leq 0.25 \mu\text{g/L}$ ) were also found to predict negative blood culture results, thereby sufficiently ruling out bacteremia at an early point in time.<sup>2</sup>
- Thus, **PCT can rapidly verify the initial clinical suspicion of bacterial infection**. This enables a more judicious use of empiric antibiotics and reduction of antibiotic exposure.

### High usage of antibiotics in children

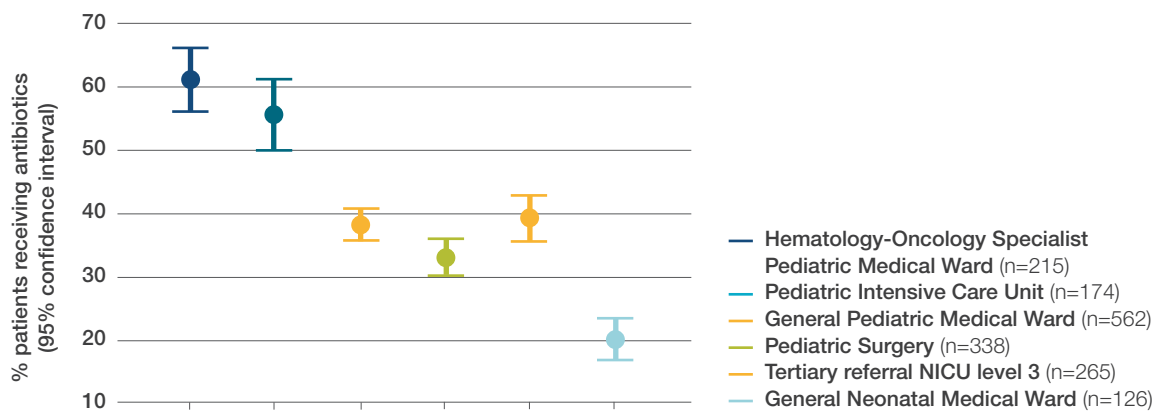


Figure 1. Antibiotic use in children by ward type (n=2172 children treated with at least 1 antibiotic, data from 50 European and 23 non-European hospitals)<sup>3</sup>

## PCT – the best in early diagnosis of bacterial infection and sepsis

Procalcitonin (PCT) is a reliable blood parameter that supports earlier and better diagnosis and clinical decision-making for systemic bacterial infections and therapy control:<sup>4</sup>

- **Fast increase after bacterial infection** within 3-6 hours (faster than CRP) (Figure 2)<sup>5,6,7</sup>
- **High sensitivity and specificity for bacterial infection**, improving clinical diagnosis (Figure 3)<sup>4,7</sup>
- **Recommended for antibiotic stewardship by the Surviving Sepsis Campaign Guideline<sup>8</sup>**
- **The Experts of the European Medicines Agency (EMA) agreed to include PCT for neonatal and pediatric sepsis diagnosis<sup>9</sup>**

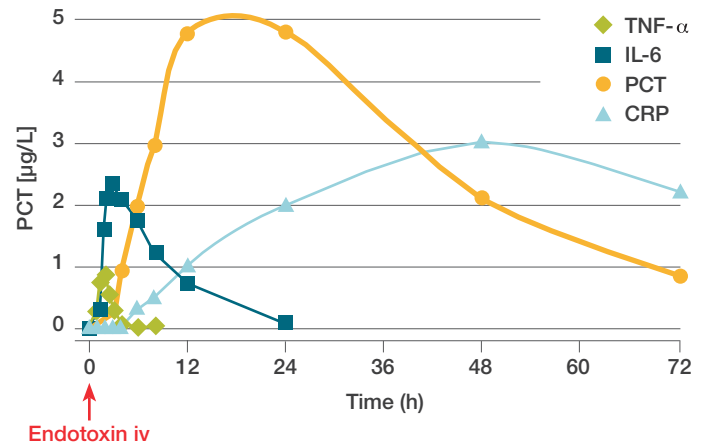


Figure 2. Kinetics of PCT compared to other inflammatory markers upon infection<sup>5,6,7</sup>

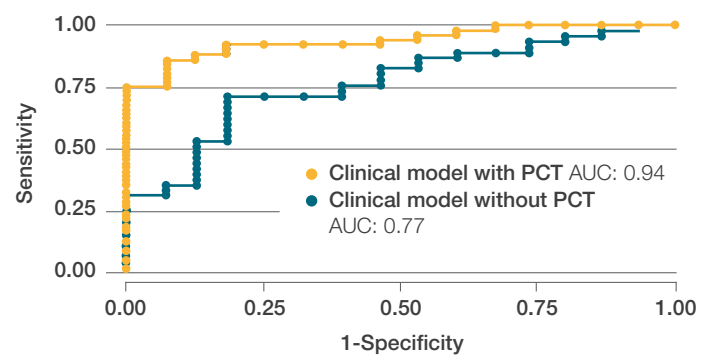


Figure 3. Accuracy of sepsis diagnosis based on a clinical model with and without PCT<sup>7</sup>



Integration of PCT into clinical algorithm improved the quality of sepsis diagnosis<sup>7</sup>

# Rapid decision making

## PCT supports differential diagnosis in pediatric emergency department

### Meningitis

Acute bacterial meningitis is a rare but life-threatening infection requiring immediate antibiotic treatment.

#### → Need for differential diagnosis!

A European multicenter case-cohort study (6 study centers, n=198) identified **PCT as the best biomarker, with an odds ratio of 139 to distinguish between bacterial and aseptic meningitis in children** (Figure 4).<sup>10</sup> PCT was therefore also included into a clinical decision rule for meningitis in children<sup>10</sup> and clinical guidelines.<sup>11,12</sup>

### Fever without source

Although most of children presenting with fever have a benign and self-limiting illness, a few are at **risk of developing a severe bacterial infection** which requires rapid therapeutic intervention with antibiotic therapy.

In a multicentric study on 1112 febrile pediatric patients <3 months of age admitted to 7 European emergency departments **PCT was the only independent risk factor for invasive bacterial infection with an odds ratio of 21.69 for PCT  $\geq 0.5 \mu\text{g/L}$** .<sup>13</sup>

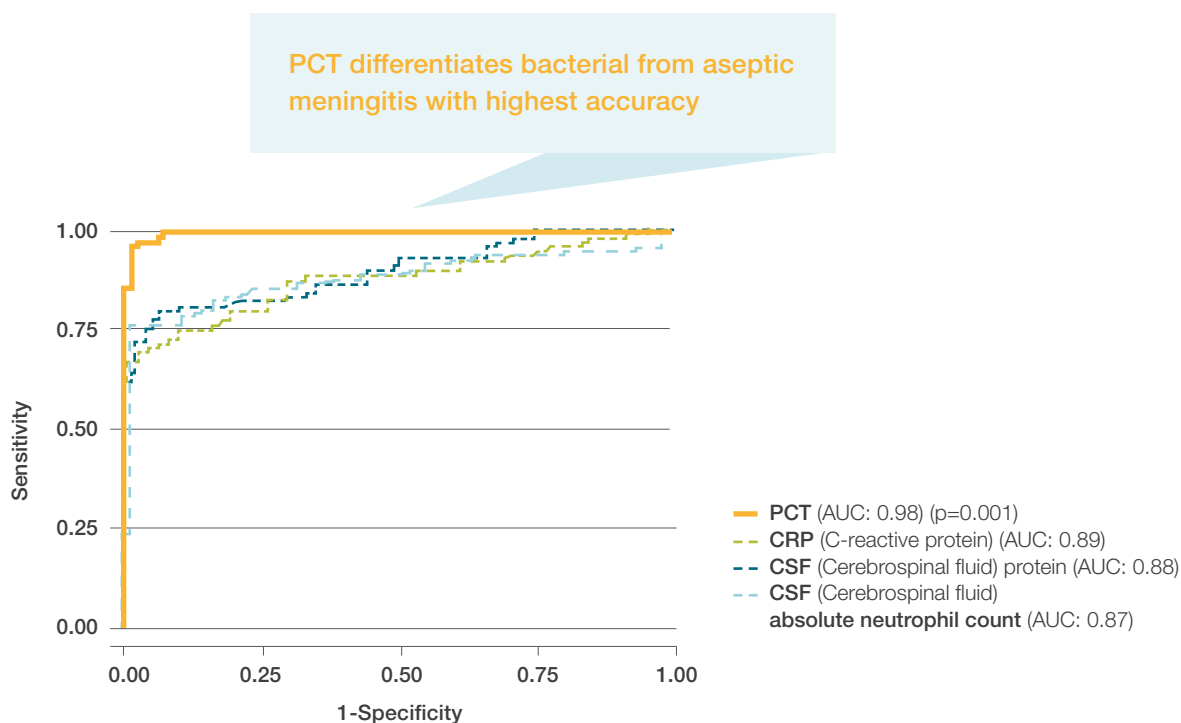


Figure 4. Receiver operating characteristics curves of the best predictors differentiating bacterial from aseptic meningitis (n=198)<sup>10</sup>

## Neutropenic fever

Bacterial infections are life-threatening for neutropenic patients. Therefore rapid differentiation of bacterial infection from other causes of fever is essential for adequate decision making and patients' outcome.<sup>1,14</sup>

In a meta-analysis of 3585 febrile episodes in neutropenic children PCT was shown to be **superior to other biomarkers (e.g. CRP, IL6) for early prediction of bacterial infection** (see Table 1).<sup>15</sup>

## Urinary tract infection (UTI)

PCT appears to be the most useful marker in differentiating lower urinary tract infection (cystitis) versus upper urinary tract infection (pyelonephritis).<sup>16</sup>

Elevated PCT levels may also predict vesicoureteral reflux and subsequent renal scarring<sup>17,18</sup> and can lead to **avoid 38% of unnecessary cystourethrographies** with DMSA (technetium-99m (99mTc)-dimercaptosuccinic acid) in children (Table 1), leading to a **cost reduction of about 30%**.<sup>17</sup>

	Meningitis <sup>10</sup>	FWS <sup>19</sup>	Neutropenic fever <sup>15</sup>	UTI <sup>16</sup>	UTI severity assessment <sup>18</sup>		
	Differentiate bacterial from viral meningitis	Identify invasive bacterial infection as the cause of fever	Identify bacterial infection as cause of neutropenic fever	Differentiate acute pyelonephritis from cystitis	Prediction of vesicoureteral reflux (VUR)		Prediction of renal scarring
					All grades (I-V)	Grades III-V	
<b>PCT cut-off [µg/L]</b>	0.5	0.5	0.2	0.5	0.5	0.5	0.5
<b>Sensitivity</b>	0.99	0.78	0.96	0.97	0.76	0.95	1.00
<b>Specificity</b>	0.83	0.72	0.85	0.67	0.51	0.54	0.57
<b>PPV (%) (rule in)</b>	83	40	n.a	84	47.2	42.3	46.0
<b>NPV (%) (rule out)</b>	99	94	n.a	91.7	79.1	96.5	100
<b>Likelihood ratio +</b>		2.69			1.56	2.06	2.31
<b>Likelihood ratio -</b>		0.25			0.46	0.1	0

**Table 1.** Diagnostic value of PCT in children with meningitis<sup>10</sup>, children with fever without source (FWS)<sup>19</sup>, children with neutropenic fever<sup>15</sup>, and children with urinary tract infection (UTI)<sup>16</sup> and clinical performance characteristics of PCT for prediction of vesicoureteral reflux (VUR) and renal scarring in children with first febrile pyelonephritis<sup>18</sup>  
 PPV = positive predictive value  
 NPV = negative predictive value

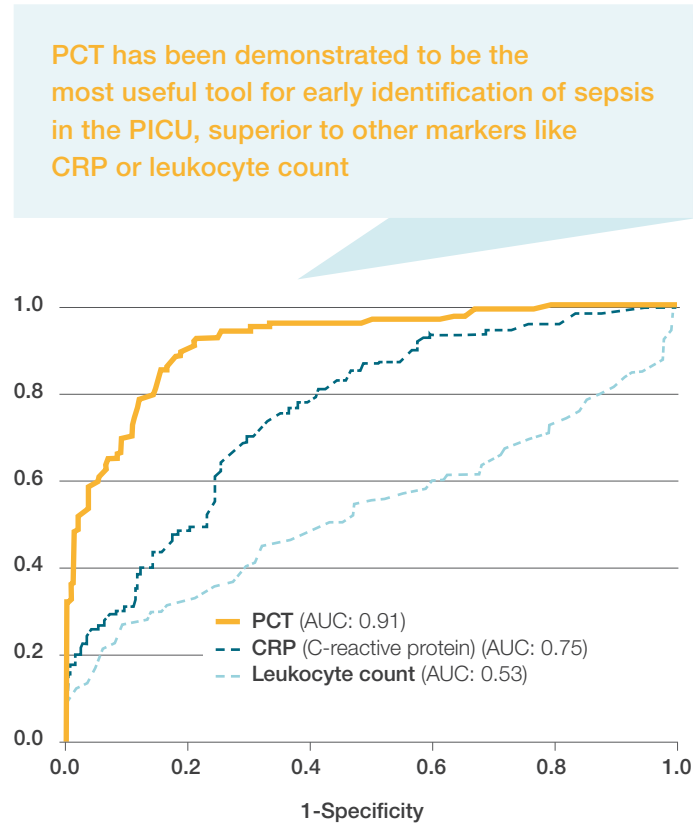
# Advanced diagnostic assessment

## PCT in pediatric intensive care and pediatric surgery

### Early identification of Sepsis

SIRS occurs in 82% of patients admitted to pediatric intensive care units (PICUs), including 23% with sepsis. However, it is difficult in the PICU to reliably distinguish SIRS patients who are infected versus non-infected, because clinical and laboratory signs are similar to those presented in different severities of SIRS caused by infectious or noninfectious disease.<sup>1</sup>

**Figure 5.** Receiver operating characteristics (ROC) curves for prediction of sepsis in patients admitted to the PICU; comparing PCT, CRP and leukocyte count (n=94)<sup>20</sup>

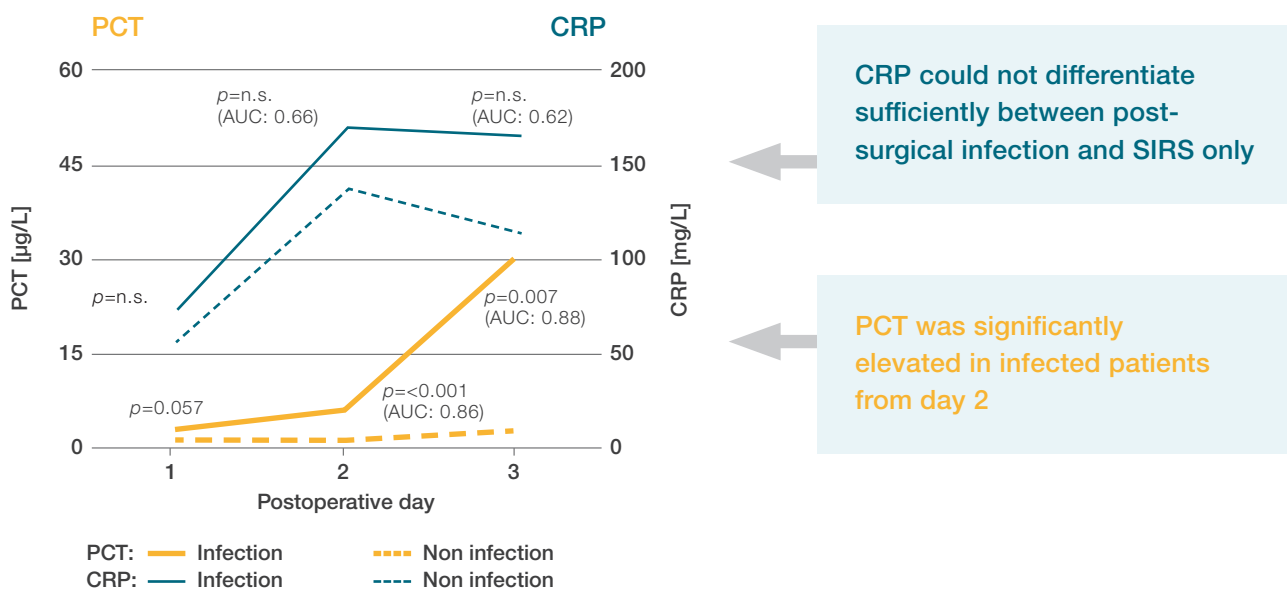


PCT has been proven to be superior to other markers for early detection of bacterial infection and sepsis

## Early detection of post-surgical infection

Extensive surgical interventions induce systemic inflammatory reaction which makes it a challenge to detect potential infectious complications early after surgery. Also biomarkers can be temporarily nonspecifically induced due to pronounced post-surgical inflammation.<sup>4</sup>

As this transient increase lasts a relatively short time for PCT, serial testing of PCT can be used to assess the course of the patient's response and differentiate post-surgical infection from non-infection induced SIRS.<sup>4,21</sup>



**Figure 6.** CRP and PCT course in children with and without infectious complication after cardiac surgery with cardiopulmonary bypass (CPB) (n=231)<sup>21</sup>

# Reduction of antibiotics

## PCT-guided antibiotic stewardship

### Lower respiratory tract infection

Lower respiratory tract infection (LRTI) is the most common infection in children. Etiologic diagnosis is not generally achieved and the pathogen eludes identification in most cases. Therefore overprescription of antibiotics (AB) is frequently observed in all hospital departments, especially in very young children (Figure 1).<sup>3</sup>

#### Antibiotic overuse contributes to

- increasing bacterial resistance
- rising medical costs
- raised risks of drug-related adverse events

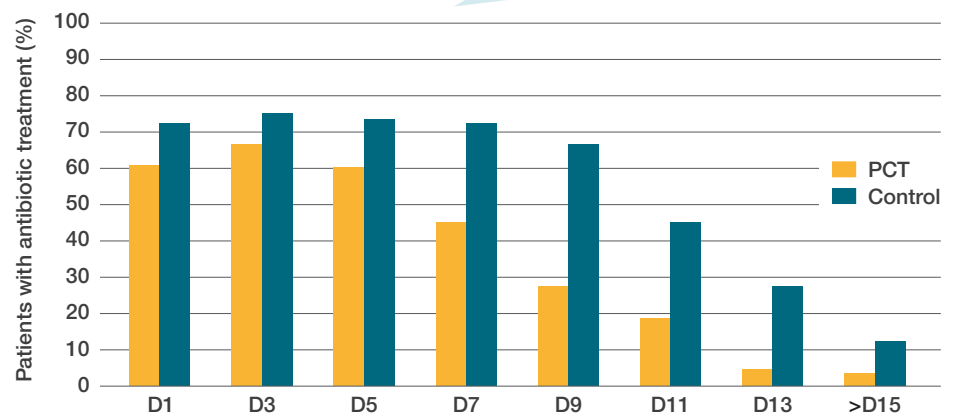
PCT has been proven to be a useful tool for efficient and safe guidance of AB treatment according to individual patient needs, both in adults and children.<sup>22,23,24,25</sup>

#### PCT-guidance in children with respiratory tract infections of varying severity leads to a strong reduction of antibiotic exposure (Figure 7)<sup>22,23</sup> due to

- reduced prescription rate
- earlier discontinuation of antibiotics

**-3.4 AB days**

Overall reduction of AB exposure: 5.7 days in PCT group vs. 9.1 days in control group<sup>22</sup>



**Figure 7.** Antibiotic prescribing rate: Antibiotic treatment by day since randomization for pediatric patients with community-acquired pneumonia (CAP) (n=215)<sup>22</sup>  
 AB days = days of antibiotic therapy



## PCT-based clinical algorithms facilitate a more targeted use of antibiotics

A Cochrane review on randomized-controlled studies (14 studies with n=4221 adult patients thereof 7 studies with n=2605 coming from the emergency department) has proven the safe use of PCT to assist decisions about initiation and/or duration of antibiotic therapy without influencing mortality or treatment failure.<sup>26</sup>

Initiation, continuation or termination of antibiotic treatment in pediatric patients was also strictly guided by PCT cut-off levels used in previous trials in adults with LRTI (Figure 8). In the control group, antibiotic treatment was initiated based on physician assessment and clinical guidelines.<sup>22</sup>

PCT [ $\mu\text{g/L}$ ]	<0.1	$\geq 0.1$ -<0.25	$\geq 0.25$ -<0.5	$\geq 0.5$
Bacterial infection?	Very unlikely	Unlikely	Likely	Very likely
Recommendation for antibiotics	AB NO!	AB No	AB Yes	AB YES!
Important considerations and overruling criteria	<ul style="list-style-type: none"> <li>If antibiotics are withheld, control PCT after 6-24 h</li> <li>The PCT algorithm could be overruled for patients with life threatening infections, defined as severe comorbidity, emerging ICU need during initial follow-up, or hemodynamic or respiratory instability.</li> </ul>		<ul style="list-style-type: none"> <li>Consider the course of PCT</li> <li>Discontinuation of antibiotics was encouraged                             <ul style="list-style-type: none"> <li>- for all patients upon clinical stabilization and when PCT values fell below 0.25 <math>\mu\text{g/L}</math></li> <li>- for patients with initial PCT values &gt;10 <math>\mu\text{g/L}</math> when levels decreased below 90% of the initial value</li> </ul> </li> </ul>	

Figure 8. PCT-based clinical algorithm for guidance of antibiotic treatment in children with lower respiratory tract infections<sup>22</sup>

PCT testing from time of admission facilitates a more targeted use of antibiotics and contributes to minimize the risk of resistance development

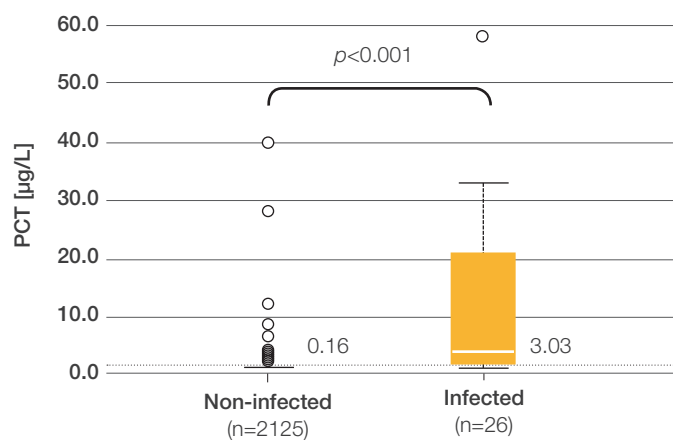
# How to manage PCT values in neonates

## PCT allows rule out of sepsis from cord blood

### Lower respiratory tract infection

PCT measurement from blood cord is an early and discriminating marker of early onset of neonatal infection and improves accuracy of clinical sepsis diagnosis significantly especially in comparison to CRP.

For detecting early onset neonatal sepsis, PCT can be measured in the venous blood including venous blood from the umbilical cord.<sup>27</sup>



**Figure 9.** PCT measurements of 2151 newborns with an initial suspicion of infection. 1.2% (n=26) were probably or certainly infected judged by clinical signs, abnormal laboratory results (excluding PCT) or microbiology results and had a significantly increased PCT value. The negative predictive value was 99%.<sup>28</sup>



## PCT reference ranges during the first 72 hours after birth

Normal birth and extrauterine adaptation stimulate an acute phase reaction in the newborn infant with release of PCT and other acute phase proteins. **In healthy neonates, plasma PCT concentrations increase gradually after birth, reach peak values at about 24 hours of age and then decrease to normal values below 0.5 µg/L by 72 hours of age.**<sup>29</sup>

After this period, the adult reference values apply.

In newborns admitted to the neonatal intensive care unit with clinical signs of respiratory distress without infection, peak plasma PCT concentrations at 48 hours of age have been reported to be higher (mean 3-4 µg/L) with large interindividual variations (range 0.2-20 µg/L).<sup>29</sup>

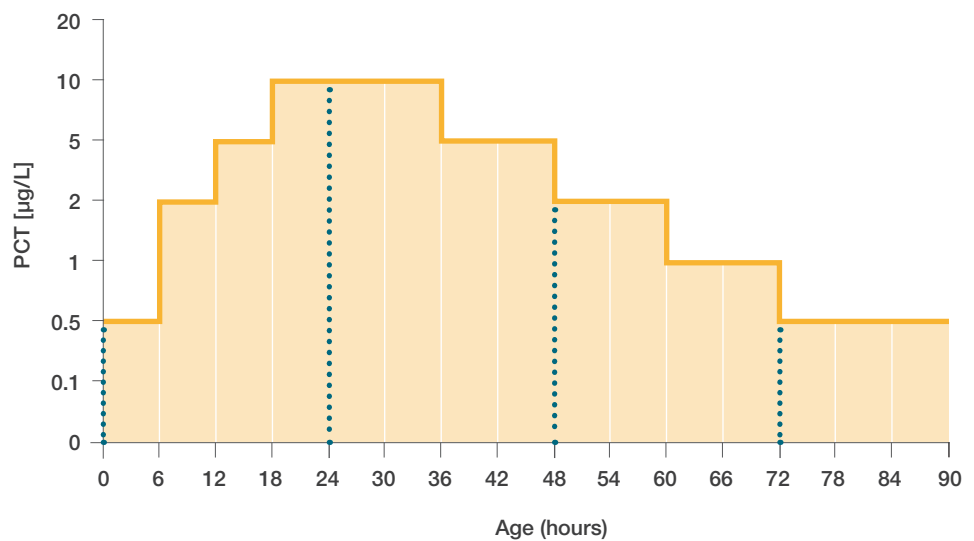


Figure 10. Age adjusted PCT cut-off values in newborns<sup>29</sup>

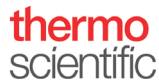


### B·R·A·H·M·S PCT – Secured clinical decision making independent of platform

PCT cut-offs and clinical algorithms were established by use of the global reference standard Thermo Scientific™ B·R·A·H·M·S PCT™ sensitive KRYPTOR™

## B·R·A·H·M·S PCT

### Secured clinical decision making independent of platform



B·R·A·H·M·S PCT sensitive KRYPTOR



ALINITY i B·R·A·H·M·S PCT  
ARCHITECT B·R·A·H·M·S PCT



VIDAS® B·R·A·H·M·S PCT



LIAISON® B·R·A·H·M·S PCT II GEN



Lumipulse® G B·R·A·H·M·S PCT



PATHFAST™ B·R·A·H·M·S PCT



VITROS® B·R·A·H·M·S PCT



ELECSYS® B·R·A·H·M·S PCT



ADVIA Centaur® B·R·A·H·M·S PCT  
Atellica® IM B·R·A·H·M·S PCT  
Dimension® EXL™ LOCI® B·R·A·H·M·S PCT\*

\* coming 2023

Not all intended uses and applications mentioned in this printing are registered for every product in every country.

#### References

- Pacifico et al., Adv Clin Chem 2013; 59, 203-63
- Mueller et al., CHEST 2010; 138: 121-9
- Versporten et al., Ped Infect Dis 2013; 32 (6)
- Meisner, Procalcitonin – Biochemistry and Clinical Diagnosis, ISBN 978-3-8374-1241-3, UNI-MED, Bremen 2010
- Brunkhorst et al., Intensive Care Med 1998; 24: 888-92
- Dandona, J Clin Endocrinol Metab 1994; 79: 1605-8
- Harbarth et al., Am J Respir Crit Care Med 2001; 164: 396-402
- Rhodes et al., Intensive Care Med 2017; 43 (3): 304-377
- European Medicines Agency (EMA): [http://www.ema.europa.eu/docs/en\\_GB/document\\_library/Report/2010/12/WC500100199.pdf](http://www.ema.europa.eu/docs/en_GB/document_library/Report/2010/12/WC500100199.pdf)
- Dubos et al., Arch Pediatr Adolesc Med 2008; 162 (12): 1157-63
- AMWF guideline "Viral Meningoenzephalitis": <http://www.awmf.org/leitlinien/detail/II/030-100.htm>
- Practice guidelines for acute bacterial meningitides. Médecine et Maladies Infectieuses 2009; 39 (6): 356-67
- Gomez et al., Pediatrics 2012; 130 (5): 815-822
- Hatzistilianou et al., Clin Invest Med 2007; 30 (2), E75-85
- Phillips et al. BMC Medicine 2012, 10:6: <http://www.biomedcentral.com/1741-7015/10/6>
- Chen et al., Emerg Med J 2013; 30 (5): 406-10
- Leroy et al., J Pediatr 2007; 150 (1): 89-95
- Liao et al., Pediatr Nephrol 2014; 29 (9): 1567-7419.
- Yo et al., Ann Emerg Med 2012; 60 (5), 591-600
- Rey et al., Intensive Care Med 2007; 33: 477-84
- Jordan et al., Pediatr Crit Care Med 2012; 13 (4), 441-5
- Baer et al., PLoS One 2013; 8 (8), e68419
- Esposito et al., Respir Med 2011; 105 (12): 1939-45
- Schuetz et al., JAMA 2009; 302: 1059-1066
- Christ-Crain et al., Lancet 2004; 363: 600-607
- Schuetz et al., Cochrane Database Syst Rev 2012; 9 CD007498
- Chiesa et al., Clin Chem 2003; 49 (1), 60-68
- Joram et al., Eur J Clin Microbiol Infect Dis 2011; 30: 1005-13
- Stocker et al., Neonatology 2010; 97(2): 165-74

#### Clinical Diagnostics

Thermo Fisher Scientific  
B·R·A·H·M·S GmbH  
Neuendorfstr. 25  
16761 Hennigsdorf, Germany

+49 (0)3302 883 0  
+49 (0)3302 883 100 fax  
info.pct@thermofisher.com  
[www.thermoscientific.com/brahms](http://www.thermoscientific.com/brahms)

Learn more at [thermoscientific.com/procalcitonin](http://thermoscientific.com/procalcitonin)  
or email us at [info.pct@thermofisher.com](mailto:info.pct@thermofisher.com)



**Not all products are CE marked or have 510(k) clearance for sale in the U.S. Availability of products in each country depends on local regulatory marketing authorization status.**

© 2023 Thermo Fisher Scientific Inc. All rights reserved. B·R·A·H·M·S PCT and all other trademarks are the property of Thermo Fisher Scientific and its subsidiaries unless otherwise specified. ADVIA Centaur, Atellica IM, Dimension EXL and LOCI are registered and protected trademarks belonging to Siemens Healthcare Diagnostics. ADVIA Centaur B·R·A·H·M·S PCT, Atellica IM B·R·A·H·M·S PCT, and Dimension EXL LOCI B·R·A·H·M·S PCT are products of Siemens Healthcare Diagnostics licensed from Thermo Fisher Scientific. ALINITY i and ARCHITECT B·R·A·H·M·S PCT are products of Abbott licensed from Thermo Fisher Scientific. Elecsys is a registered and protected trademark belonging to Roche or one of its subsidiaries. Elecsys B·R·A·H·M·S PCT is a product of Roche licensed from Thermo Fisher Scientific. LIAISON is a registered and protected trademark belonging to DiaSorin S.p.A. LIAISON B·R·A·H·M·S PCT II GEN is a product of DiaSorin S.p.A. licensed from Thermo Fisher Scientific. Lumipulse is a registered trademark of Fujirebio Inc. in Japan and in other countries. Lumipulse G B·R·A·H·M·S PCT is a product of Fujirebio Inc. licensed from Thermo Fisher Scientific. PATHFAST is a registered trademark of LSI Medience Corporation and manufactured in Japan. PATHFAST (reagents, accessories and the device) is a product of PHC Europe B.V. and sold via distributors in EMEA. PATHFAST B·R·A·H·M·S PCT is a product of LSI Medience Corporation licensed from Thermo Fisher Scientific. VIDAS is a registered trademark of bioMérieux S.A. or one of its subsidiaries. VIDAS B·R·A·H·M·S PCT is a product of bioMérieux licensed from Thermo Fisher Scientific. VITROS is a trademark of Ortho Clinical Diagnostics. VITROS B·R·A·H·M·S PCT is a product of Ortho Clinical Diagnostics licensed from Thermo Fisher Scientific. Ortho Clinical Diagnostics is a subsidiary of QuidelOrtho Corporation. KRYPTOR is a trademark of Cisbio Bioassays, licensed for use by B·R·A·H·M·S GmbH, a part of Thermo Fisher Scientific. Patents: [www.brahms.de/patents](http://www.brahms.de/patents). **107336.7**